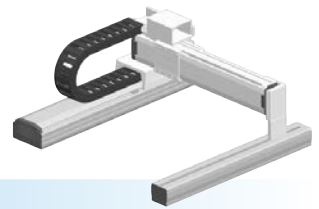


# MXYx 2 axes



● Gantry type ● Cable carrier

## Ordering method

**MXYx - C**

Model	Cable	Combination	X-axis stroke	Y-axis stroke	Cable
G1			25 to 125cm	15 to 85cm	3L: 3.5m 5L: 5m 10L: 10m
G2					
G3					
G4					

**RCX320-2** **R**

Controller / Number of controllable axes	Safety standard	Regenerative unit	Option A (OP.A)	Option B (OP.B)	Vision System	Absolute battery
Specify various controller setting items. RCX320 ▶ P.660						

**RCX222** **R**

Controller	Usable for CE	Regenerative unit	I/O selection 1	I/O selection 2
Specify various controller setting items. RCX222 ▶ P.670				

## Specification

	X-axis	Y-axis
<b>Axis construction</b> <small>Note 1</small>	F17	F14H
<b>AC servo motor output (W)</b>	400	200
<b>Repeatability</b> <small>Note 2</small> (mm)	+/-0.01	+/-0.01
<b>Drive system</b>	Ball screw φ20	Ball screw φ15
<b>Ball screw lead</b> <small>Note 3</small> (Deceleration ratio) (mm)	20	20
<b>Maximum speed</b> <small>Note 4</small> (mm/sec)	1200	1200
<b>Moving range (mm)</b>	250 to 1250	150 to 850
<b>Robot cable length (m)</b>	Standard: 3.5 Option: 5, 10	

Note 1. Use caution that the flame machining (installation holes, tap holes) differs from single-axis robots.  
 Note 2. Positioning repeatability in one direction.  
 Note 3. Leads not listed in the catalog are also available. Contact us for details.  
 Note 4. When the X-axis stroke is longer than 850mm (750mm for Y-axis), resonance of the ball screw may occur depending on the operation conditions (critical speed). In this case, reduce the speed setting on the program by referring to the maximum speeds shown in the table below.

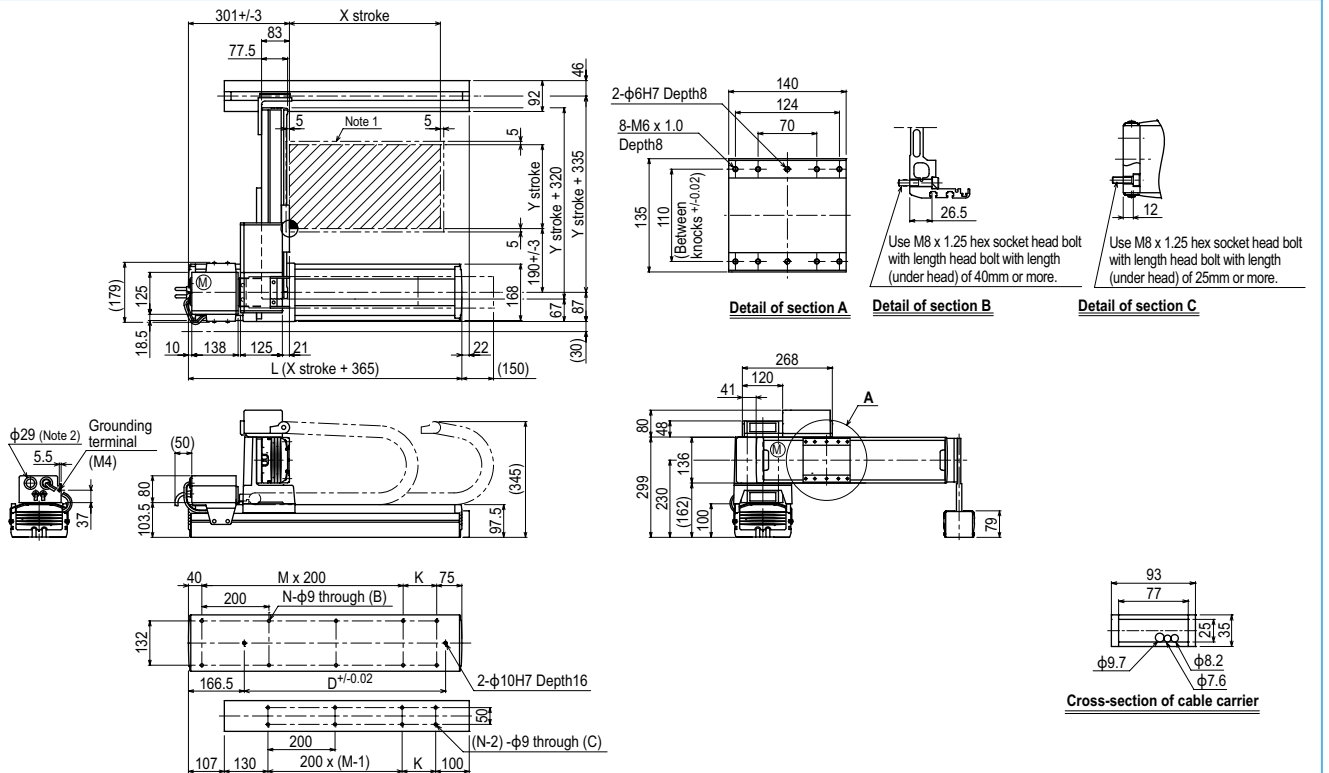
## Maximum payload (kg)

Y stroke (mm)	XY 2 axes
150	30
250	30
350	30
450	30
550	30
650	30
750	25
850	20

## Controller

Controller	Operation method
RCX320-R	Programming / I/O point trace / Remote command / Operation using RS-232C communication
RCX222-R	

## MXYx 2 axes G1



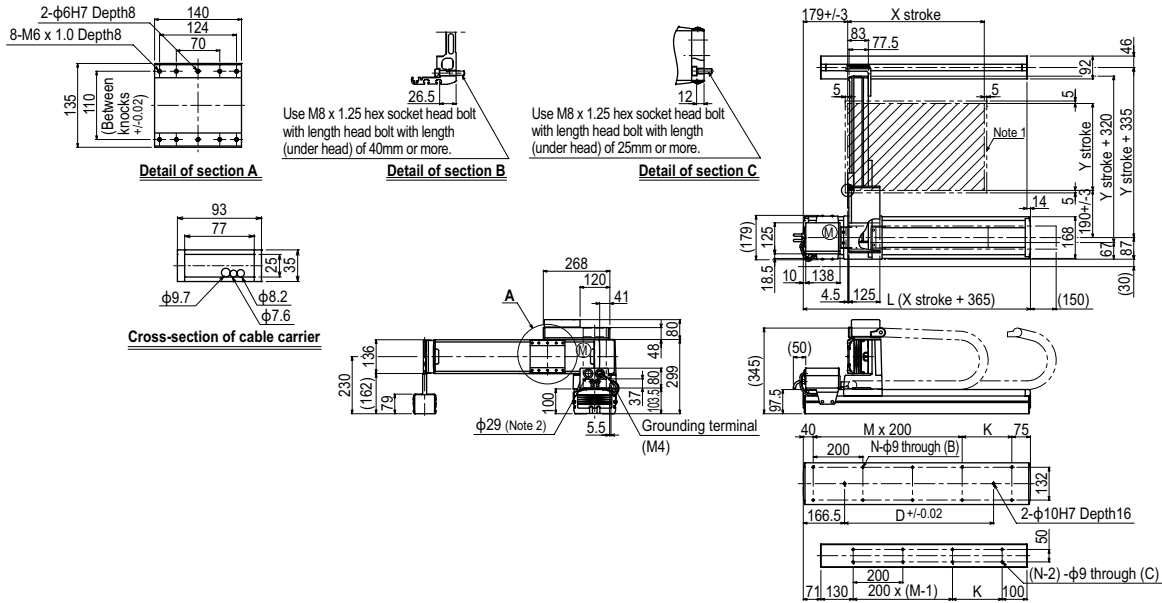
X stroke	250	350	450	550	650	750	850	950	1050	1150	1250
L	615	715	815	915	1015	1115	1215	1315	1415	1515	1615
K	100	200	100	200	100	200	100	200	100	200	100
D	240	420	600	600	780	780	960	960	1140	1140	1320
M	2	2	3	3	4	4	5	5	6	6	7
N	8	8	10	10	12	12	14	14	16	16	18
Y stroke	150	250	350	450	550	650	750	850			
<b>Maximum speed for each stroke</b> <small>Note 3</small> (mm/sec)	<b>X-axis</b>		1200				960	840	720	600	480
	<b>Speed setting</b>		-				80%	70%	60%	50%	40%
	<b>Y-axis</b>		1200		-		960	780	-		
	<b>Speed setting</b>		-		-		80%	65%	-		

Note 1. The moving range when returning to origin and the stop position when stopping by the mechanical stopper.  
 Note 2. User cable extraction port.

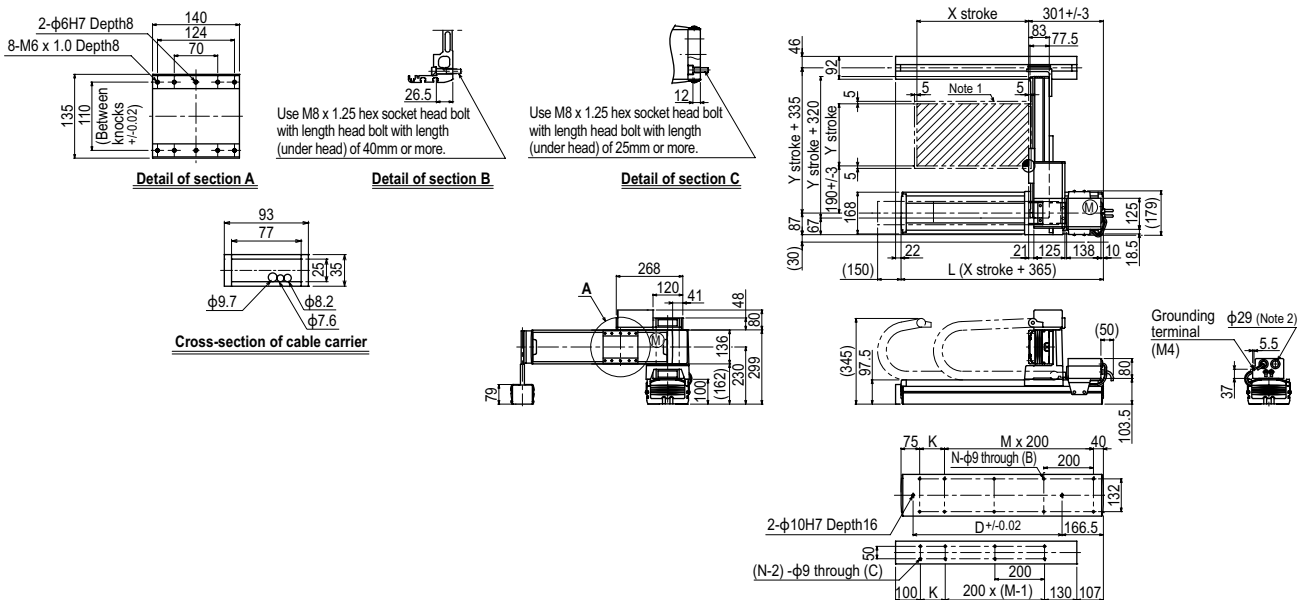
Note 3. When the X-axis stroke is longer than 850mm (750mm for Y-axis), resonance of the ball screw may occur depending on the operation conditions (critical speed). In this case, reduce the speed setting on the program by referring to the maximum speeds shown in the table at the left.

Articulated robots
YA
Linear conveyor modules
LCM
Single-axis robots
CX
Motor-less single axis actuator
Robonity
Compact single-axis robots
TRANSEVO
Single-axis robots
FLIP-X
Linear motor single-axis robots
PHASER
Cartesian robots
XY-X
SCARA robots
YK-X
Pick & place robots
YP-X
CLEAR INFORMATION BR
INFORMATION
Arm type
Gantry type
Moving arm type
Pole type
XZ type

MXyX 2 axes G2



MXyX 2 axes G3



MXyX 2 axes G4

