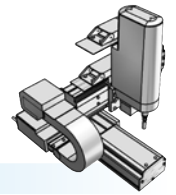


FXYx 3 axes / ZS

● Arm type ● Cable carrier ● Z-axis shaft vertical type



Ordering method

FXYx - C [] [] [] [] **15** [] **RCX340-3** [] [] [] [] [] [] [] [] [] [] []

Model	Cable	Combination	X-axis stroke	Y-axis stroke	ZR-axis	Z-axis stroke	Cable	Controller / Number of controllable axes	Safety standard	Option A (OP.A)	Option B (OP.B)	Option C (OP.C)	Option D (OP.D)	Option E (OP.E)	Absolute battery
A1			15 to 105cm	15 to 55cm	ZS12		3L: 3.5m 5L: 5m 10L: 10m								
A2					ZS6										
A3															
A4															

Specify various controller setting items. RCX340 ▶ **P.678**

Specification

	X-axis	Y-axis	Z-axis: ZS12	Z-axis: ZS6
Axis construction	-	-	-	-
AC servo motor output (W)	100	60	60	
Repeatability ^{Note 1} (mm)	+/-0.01	+/-0.02	+/-0.02	
Drive system	Ball screw φ15	Ball screw φ12	Ball screw φ12	
Ball screw lead ^{Note 2} (Deceleration ratio) (mm)	20	12	12	6
Maximum speed ^{Note 3} (mm/sec)	1200	800	1000	500
Moving range (mm)	150 to 1050	150 to 550		150
Robot cable length (m)	Standard: 3.5 Option: 5,10			

Note 1. Positioning repeatability in one direction.
 Note 2. Leads not listed in the catalog are also available. Contact us for details.
 Note 3. When the X-axis stroke is longer than 750mm, resonance of the ball screw may occur depending on the operation conditions (critical speed). In this case, reduce the speed setting on the program by referring to the maximum speeds shown in the table below.

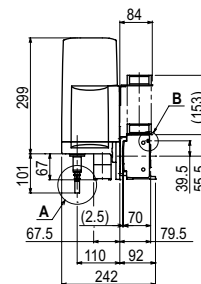
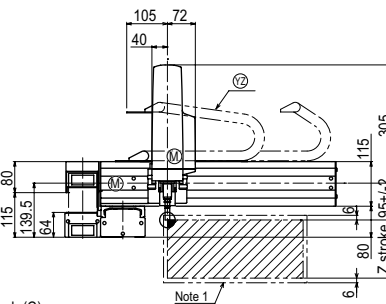
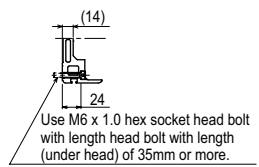
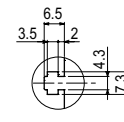
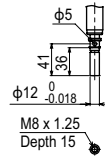
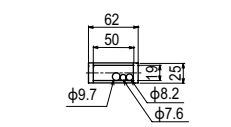
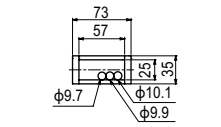
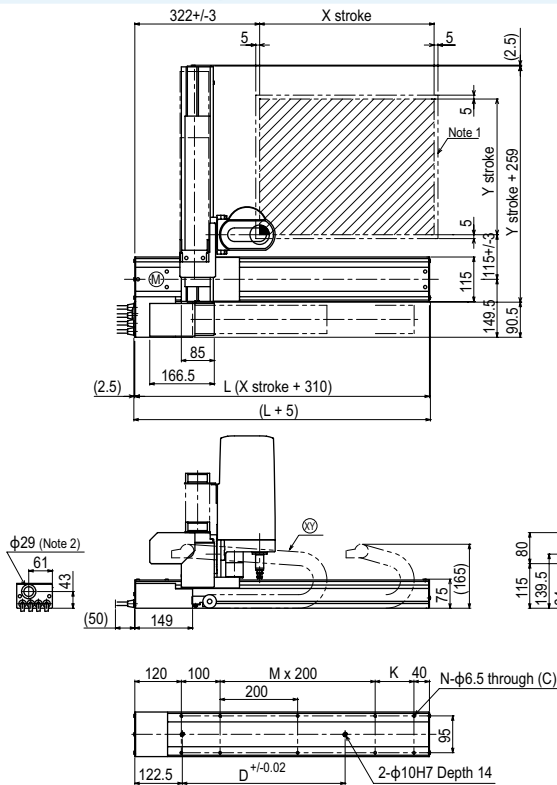
Maximum payload (kg)

Y stroke (mm)	ZS12	ZS6
150	3	5
250	3	5
350	3	5
450	3	5
550	3	3

Controller

Controller	Operation method
RCX340	Programming / I/O point trace / Remote command / Operation using RS-232C communication

FXYx 3 axes / ZS (A1)



X stroke	150	250	350	450	550	650	750	850	950	1050	
	L	460	560	660	760	860	960	1060	1160	1260	1360
K	200	100	200	100	200	100	200	100	200	100	
D	240	240	420	420	600	600	780	960	960	1140	
M	0	1	1	2	2	3	3	4	4	5	
N	6	8	8	10	10	12	12	14	14	16	
Y stroke	150	250	350	450	550						
Z stroke	150										
Maximum speed for each stroke (mm/sec) ^{Note 3}	X-axis	1200				960	780	600	540		
	Speed setting	-				80%	65%	50%	45%		

Note 1. The moving range when returning to origin and the stop position when stopping by the mechanical stopper.
 Note 2. User cable extraction port.

Note 3. When the X-axis stroke is longer than 750mm, resonance of the ball screw may occur depending on the operation conditions (critical speed). In this case, reduce the speed setting on the program by referring to the maximum speeds shown in the table at the left.

Articulated robots YA
 Linear conveyor modules LCM
 Single-axis robots CX
 Motor-less single-axis actuator Robomity
 Compact single-axis robots TRANSEVO
 Single-axis robots FLIP-X
 Linear motor single-axis robots PHASER
 Cartesian robots XY-X
 SCARA robots YK-X
 Pick & place robots YP-X
 CLEAN
 CONTROLLER INFORMATION
 Arm type
 Gantry type
 Moving arm type
 Pole type
 XZ type