

SS05H

Slider type



- High lead: Lead 20
- CE compliance
- Origin on the non-motor side is selectable

Ordering method

SS05H

Model	Lead	Model	Brake ^{Note 1}	Origin position	Grease option	Stroke	Cable length ^{Note 3}
	20: 20mm 12: 12mm 06: 6mm	S: Straight model R: Space-saving model (motor installed on right) L: Space-saving model (motor installed on left)	N: With no brake B: With brake	N: Standard ^{Note 2} Z: Non-motor side	N: Standard grease C: Clean room grease	50 to 800 (50mm pitch)	1K: 1m 3K: 3m 5K: 5m 10K: 10m

S2	I/O
Robot positioner S2: TS-S2 ^{Note 4}	NP: NPN PN: PNP CC: CC-Link DN: DeviceNet™ EP: EtherNet/IP™ PT: PROFINET GW: No I/O board ^{Note 5}
SH	Battery
Robot positioner SH: TS-SH	B: With battery (Absolute) N: None (Incremental)
SD	1
Robot driver SD: TS-SD	I/O cable 1: 1m

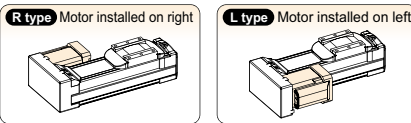
Note 1. Brake-equipped models can be selected only when the lead is 12mm or 6mm.
 Note 2. If changing from the origin position at the time of purchase, the machine reference amount must be reset. For details, refer to the manual.
 Note 3. The robot cable is flexible and resists bending.
 Note 4. See P.634 for DIN rail mounting bracket.
 Note 5. Select this selection when using the gateway function. For details, see P.96.

Basic specifications

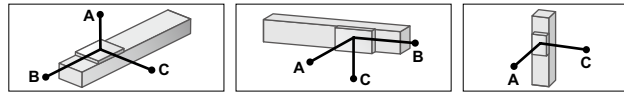
Motor	42 □ Step motor
Resolution (Pulse/rotation)	20480
Repeatability ^{Note 1} (mm)	+/-0.02
Deceleration mechanism	Ball screw φ12
Maximum motor torque (N·m)	0.47
Ball screw lead (mm)	20 12 6
Maximum speed ^{Note 2} (mm/sec)	Horizontal 1000 600 300 Vertical - 500 250
Maximum payload (kg)	Horizontal 6 8 12 Vertical - 2 4
Max. pressing force (N)	36 60 120
Stroke (mm)	50 to 800 (50pitch)
Overall length (mm)	Horizontal Stroke+286 Vertical Stroke+306
Maximum outside dimension of body cross-section (mm)	W55 × H56
Cable length (m)	Standard: 1 / Option: 3, 5, 10

Note 1. Positioning repeatability in one direction.
 Note 2. When the stroke is longer than 600mm, resonance of the ball screw may occur depending on the operation conditions (critical speed). In this case, reduce the speed setting on the program by referring to the maximum speeds shown in the table below.

Motor installation (Space-saving model)



Allowable overhang ^{Note}



	Horizontal installation (Unit: mm)			Wall installation (Unit: mm)			Vertical installation (Unit: mm)	
	A	B	C	A	B	C	A	C
Lead 20	2kg	599	225	291	2kg	262	203	554
4kg	366	109	148	4kg	118	88	309	
6kg	352	71	104	6kg	71	49	262	
4kg	500	118	179	4kg	146	96	449	
Lead 12	6kg	399	79	118	6kg	85	55	334
8kg	403	56	88	8kg	55	34	305	
6kg	573	83	136	6kg	101	62	519	
8kg	480	61	100	8kg	64	39	413	
10kg	442	47	78	10kg	43	26	355	
12kg	465	39	64	12kg	28	17	338	

Note. Distance from center of slider upper surface to carrier center-of-gravity at a guide service life of 10,000 km (Service life is calculated for 600mm stroke models).

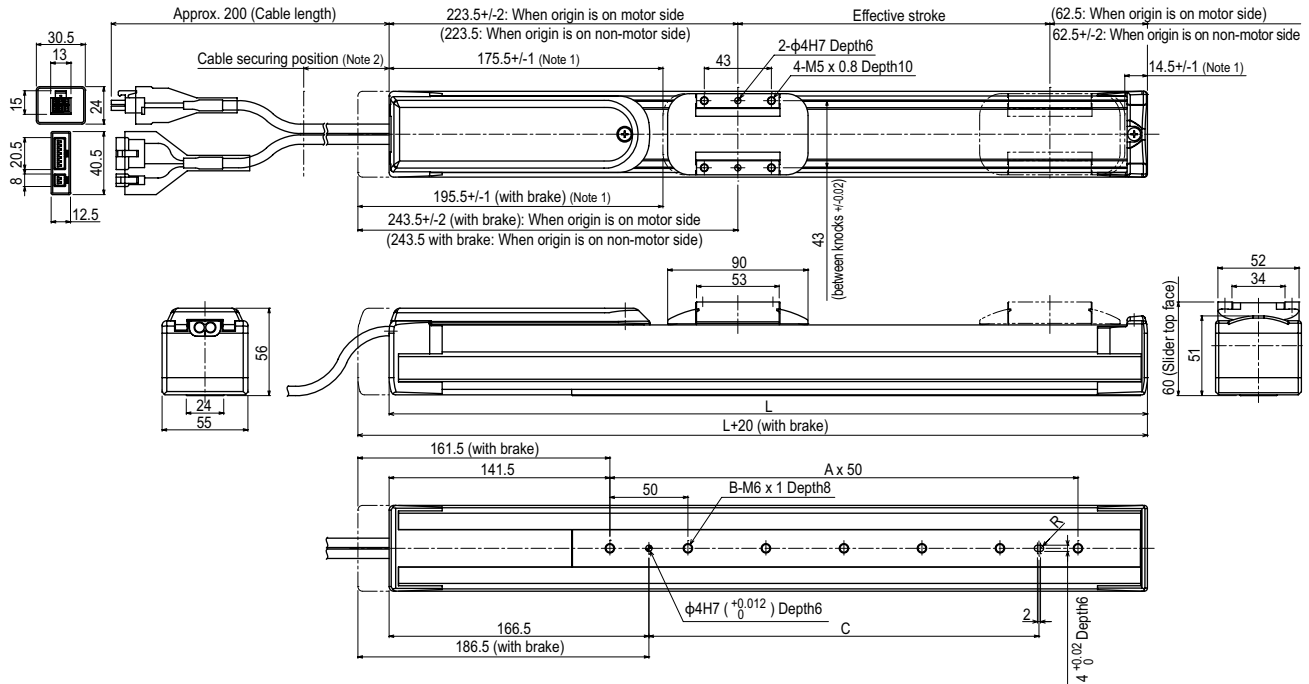
Static loading moment

(Unit: N·m)		
MY	MP	MR
32	38	34

Controller

Controller	Operation method
TS-S2	I/O point trace / Remote command
TS-SH	Remote command
TS-SD	Pulse train control

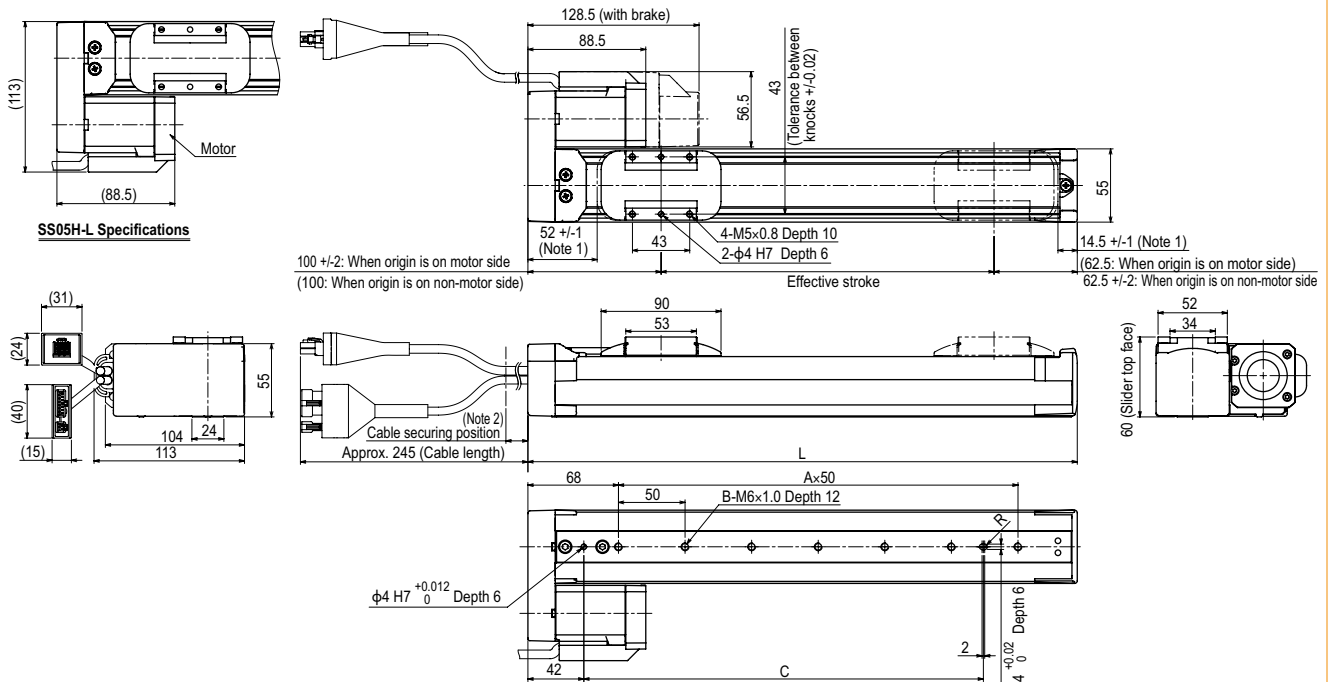
SS05H Straight model **S**



Effective stroke	50	100	150	200	250	300	350	400	450	500	550	600	650	700	750	800
	L	336	386	436	486	536	586	636	686	736	786	836	886	936	986	1036
A	3	4	5	6	7	8	9	10	11	12	13	14	15	16	17	18
B	4	5	6	7	8	9	10	11	12	13	14	15	16	17	18	19
C	100	150	200	250	300	350	400	450	500	500	500	500	500	500	500	500
Weight (kg) ^{Note 4}	2.4	2.6	2.8	3.0	3.2	3.4	3.6	3.8	4.0	4.2	4.4	4.5	4.7	4.9	5.1	5.3
Maximum speed for each stroke ^{Note 5} (mm/sec)	Lead20	1000														
	Lead12 (Horizontal)	600														
	Lead12 (Vertical)	500														
	Lead6 (Horizontal)	300														
	Lead6 (Vertical)	250														
Speed setting	-															
													93%	83%	73%	63%

Note 1. Stop positions are determined by the mechanical stoppers at both ends.
 Note 2. Secure the cable with a tie-band 100mm or less from unit's end face to prevent the cable from being subjected to excessive loads.
 Note 3. The cable's minimum bend radius is R30.
 Note 4. These are the weights without a brake. The weights are 0.2kg heavier when equipped with a brake.
 Note 5. When the stroke is longer than 600mm, resonance of the ball screw may occur depending on the operation conditions (critical speed). In this case, reduce the speed setting on the program by referring to the maximum speeds shown in the table at the left.

SS05H Space-saving model **R** **L**



SS05H-L Specifications

100 +/-2: When origin is on motor side
 (100: When origin is on non-motor side)
 Effective stroke
 14.5 +/-1 (Note 1)
 (62.5: When origin is on motor side)
 62.5 +/-2: When origin is on non-motor side

Effective stroke	50	100	150	200	250	300	350	400	450	500	550	600	650	700	750	800
L	212.5	262.5	312.5	362.5	412.5	462.5	512.5	562.5	612.5	662.5	712.5	762.5	812.5	862.5	912.5	962.5
A	2	3	4	5	6	7	8	9	10	11	12	13	14	15	16	17
B	3	4	5	6	7	8	9	10	11	12	13	14	15	16	17	18
C	100	150	200	250	300	350	400	450	500	500	500	500	500	500	500	500
Weight (kg) ^{Note 4}	1.7	1.9	2.1	2.3	2.5	2.7	2.8	3.0	3.2	3.4	3.6	3.8	4.0	4.2	4.4	4.6
Maximum speed for each stroke ^{Note 5} (mm/sec)																
Lead20	1000															
Lead12 (Horizontal)	600															
Lead12 (Vertical)	500															
Lead6 (Horizontal)	300															
Lead6 (Vertical)	250															
Speed setting	-															
													93%	83%	73%	63%

Note 1. Stop positions are determined by the mechanical stoppers at both ends.
 Note 2. Secure the cable with a tie-band 80mm or less from unit's end face to prevent the cable from being subjected to excessive loads.
 Note 3. The cable's minimum bend radius is R30.
 Note 4. These are the weights without a brake. The weights are 0.2kg heavier when equipped with a brake.
 Note 5. When the stroke is longer than 600mm, resonance of the ball screw may occur depending on the operation conditions (critical speed). In this case, reduce the speed setting on the program by referring to the maximum speeds shown in the table at the left.
 Note 6. The belt cover's left and right sides are asymmetrical. Therefore, if the motor mounting orientation is changed, the cover cannot be attached.