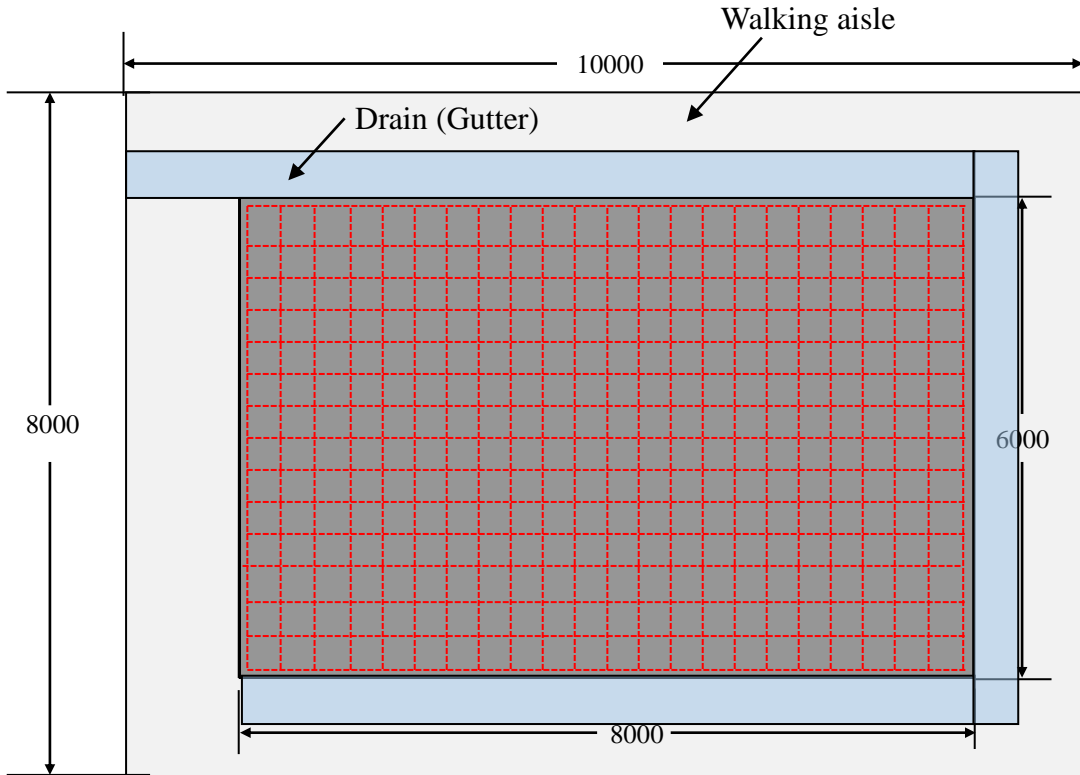


# Concrete foundation for YCW-008A



### 【Requirement】

Total load: About 30 tons

### 【Recommended size】

Iron reinforce bar

1) Diameter : 13 mm

2) Pitch : 200 mm

----- : Iron reinforce bar

Minimum amount for concrete foundation only : 10m<sup>3</sup>  
(Excluding walk aisle, fence, drainage etc.)

Gravel (below concrete layer) : 8m<sup>3</sup>

Total length of the iron bar: 494 meter.

### 【Quality test】

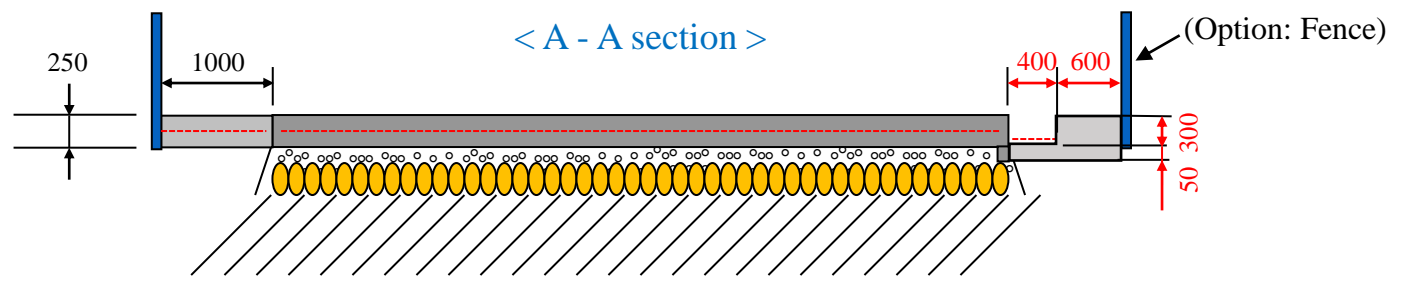
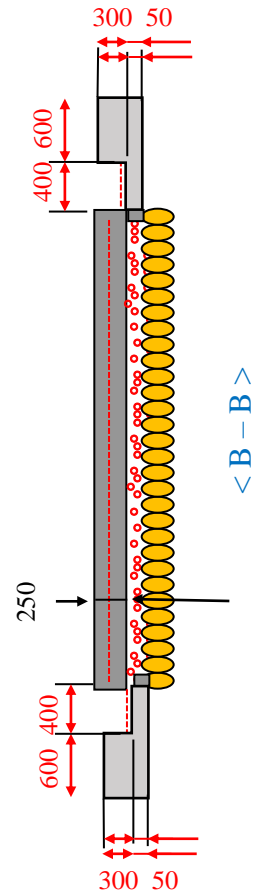
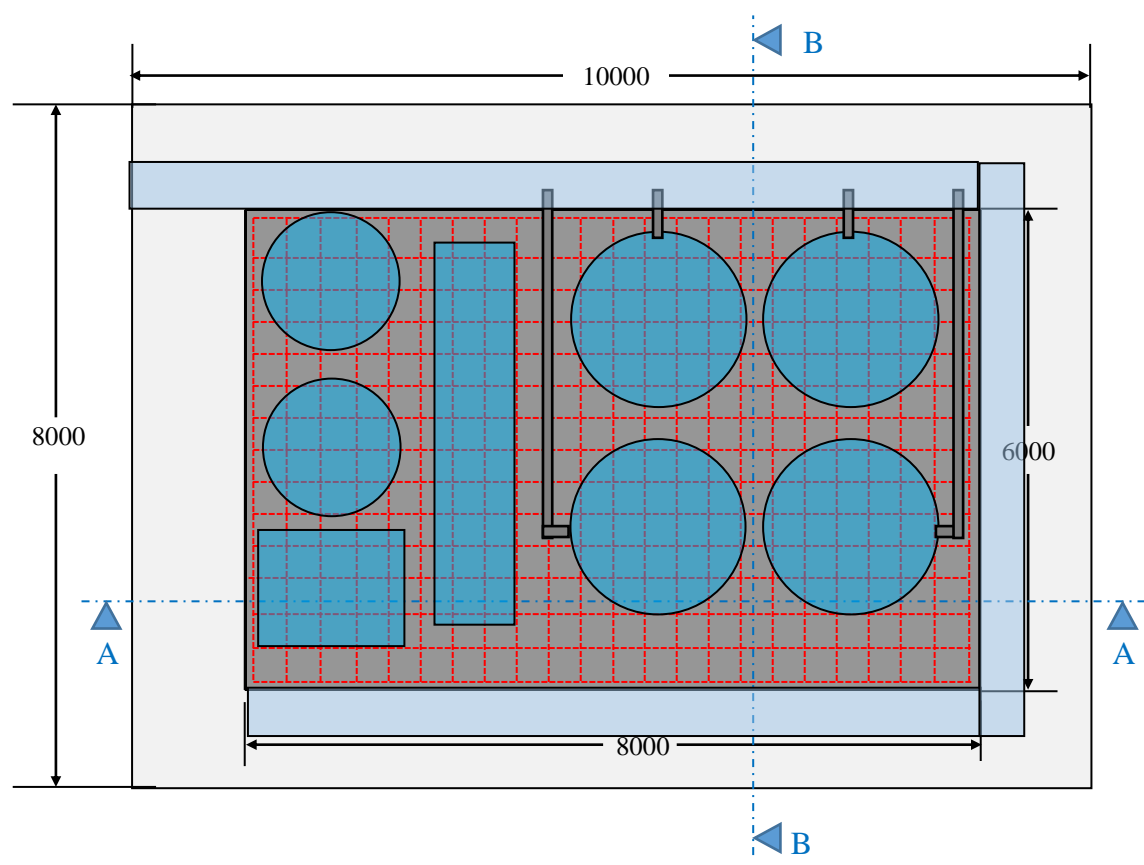
#### Flatness:

The height gap from the edge to another edge is allowed up to  $\pm 1$  cm difference.

#### Load:

Refer to the page 3.

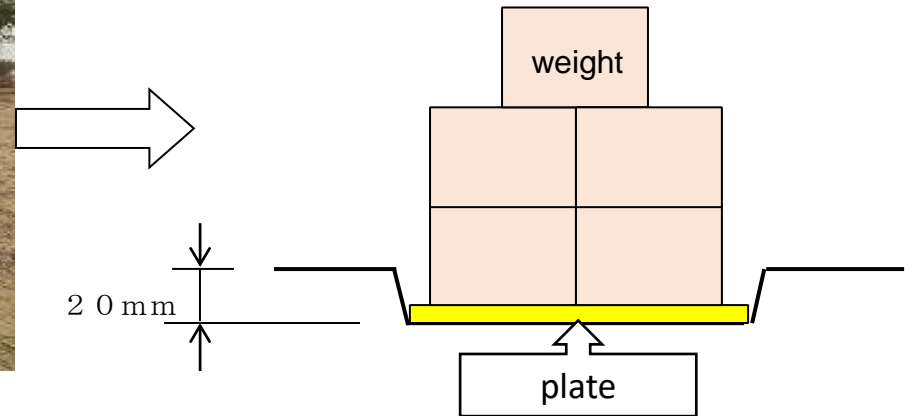
# Dimensions



- : Iron reinforce bar
- ● : Gravel

Unit : mm

# Load test



**Purpose:** To evaluate the land strength at the site

## Tool:

- The wooden or an iron plate with 300mm × 300mm , the thickness 5 mm
- 100kg in weight, sand, gravel or steel etc.

## Procedure :

1. Put the plate on the ground where the concrete foundation will be constructed
2. Put the weight on the plate with good balance
3. Keep the plate with the weight for 24 hours
4. Remove the plate and the weight
5. Measure how many millimeters the ground sunk
  - 20mm or less: Acceptable
  - More than 20mm: Not acceptable (Footing is needed)

# Sample photos

